

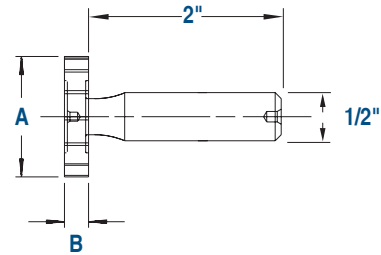
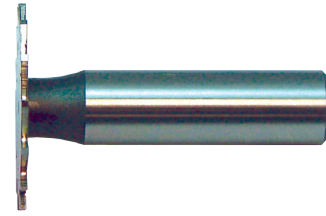


Narrow Width Keyseat Cutters — Shank Type

KEO narrow width keyseat cutters provide many standard width and diameter combinations to accommodate a variety of milling requirements.

A		B	
Head Dia.	Product Number	Head Width	Teeth (RH)
1/4	68981	1/64	Str.-8
1/4	68978	0.020	Str.-8
1/4	68982	1/32	Str.-8
1/4	68983	3/64	Str.-8
5/16	68984	1/64	Str.-8
5/16	68979	0.020	Str.-8
5/16	68985	1/32	Str.-8
5/16	68986	3/64	Str.-8
3/8	68987	1/64	Str.-8
3/8	68980	0.020	Str.-8
3/8	68988	1/32	Str.-8
3/8	68989	3/64	Str.-8
1/2	68990	1/64	Str.-10
1/2	68991	0.020	Str.-10
1/2	69000	1/32	Str.-10
1/2	69001	3/64	Str.-10
5/8	69009	0.020	Str.-10
5/8	69010	1/32	Str.-10
5/8	69011	3/64	Str.-10
5/8	69020	1/16	Str.-10
5/8	69021	5/64	Str.-10
3/4	69030	1/32	Str.-10
3/4	69031	3/64	Str.-10
3/4	69040	1/16	Str.-10
3/4	69041	5/64	Str.-10
3/4	69050	3/32	Str.-10
3/4	69051	7/64	Str.-10
7/8	69060	1/32	Str.-12
7/8	69061	3/64	Str.-12
7/8	69070	1/16	Str.-12
7/8	69071	5/64	Str.-12
7/8	69080	3/32	Str.-12
7/8	69081	7/64	Str.-12
7/8	69090	1/8	Str.-12
7/8	69091	9/64	Str.-12
1	69098	1/32	Str.-12
1	69099	3/64	Str.-12
1	69100	1/16	Str.-12
1	69101	5/64	Str.-12
1	69110	3/32	Str.-12
1	69111	7/64	Str.-12
1	69120	1/8	Str.-12
1	69121	9/64	Str.-12
1	69130	5/32	Str.-12
1	69131	11/64	Str.-12

A		B	
Head Dia.	Product Number	Head Width	Teeth (RH)
1-1/8	69139	3/64	Str.-12
1-1/8	69140	1/16	Str.-12
1-1/8	69141	5/64	Str.-12
1-1/8	69150	3/32	Str.-12
1-1/8	69151	7/64	Str.-12
1-1/8	69160	1/8	Str.-12
1-1/8	69161	9/64	Str.-12
1-1/8	69170	5/32	Str.-12
1-1/8	69171	11/64	Str.-12
1-1/4	69179	3/64	Str.-14
1-1/4	69180	1/16	Str.-14
1-1/4	69181	5/64	Str.-14
1-1/4	69190	3/32	Str.-14
1-1/4	69191	7/64	Str.-14
1-1/4	69200	1/8	Str.-14
1-1/4	69201	9/64	Str.-14
1-1/4	69210	5/32	Str.-14
1-1/4	69211	11/64	Str.-14
1-3/8	69219	3/64	Str.-14
1-3/8	69220	1/16	Str.-14
1-3/8	69221	5/64	Str.-14
1-3/8	69230	3/32	Str.-14
1-3/8	69231	7/64	Str.-14
1-3/8	69240	1/8	Str.-14
1-3/8	69241	9/64	Str.-14
1-3/8	69250	5/32	Str.-14
1-3/8	69251	11/64	Str.-14
1-3/8	69260	3/16	Str.-14
1-3/8	69261	13/64	Str.-14
1-3/8	69270	7/32	Str.-14
1-1/2	69279	3/64	Str.-16
1-1/2	69280	1/16	Str.-16
1-1/2	69281	5/64	Str.-16
1-1/2	69290	3/32	Str.-16
1-1/2	69291	7/64	Str.-16
1-1/2	69300	1/8	Str.-16
1-1/2	69301	9/64	Str.-16
1-1/2	69310	5/32	Str.-16
1-1/2	69311	11/64	Str.-16
1-1/2	69320	3/16	Str.-16
1-1/2	69321	13/64	Str.-16
1-1/2	69330	7/32	Str.-16
1-1/2	69331	15/64	Str.-16



Tolerance		
Cutter Diameter		
1/4" up to and including 3/4"	+0.010"	+0.015"
7/8" up to and including 1-1/8"	+0.012"	+0.017"
1-1/4" up to and including 1-1/2"	+0.015"	+0.020"
Shank Diameter		
	-0.0001"	-0.0005"
Width		
	+0.0005"	-0.0005"

All dimensions in inches. Many tools are available with additional coatings. Please call for quote.

All dimensions in inches.

Many tools are available with additional coatings. Please call for quote.